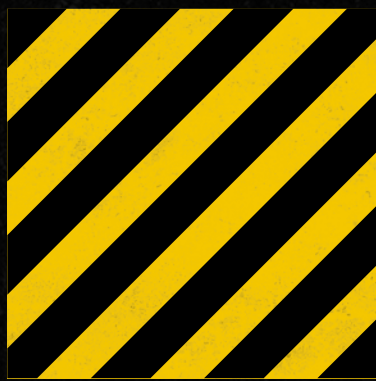




**HYDREMA**



Subject to change. Photos may be shown with optional equipment. - 0855474 / 02/2017



**HYDREMA US INC.**  
Call +1 404 614 1747

**MORE INFO**  
[www.hydrema.us](http://www.hydrema.us)



**HYDREMA**

**Hydrema**  
**MX14 MX16 MX18**  
**TIER 4 FINAL**

**COMPACT WHEELED EXCAVATORS**



# Innovative earthmoving since 1959

**Since 1959 Hydrema has developed, manufactured, sold and serviced high-tech construction machines. Efficient, innovative and high-quality machines. Our products distinguish themselves from other products on the market through their technical and physical capabilities. Very well suited to perform specialized tasks in construction and installation work.**

 **HYDREMA**





# City excavators that set the standard.

## The Hydrema MX series sets new standards for compact wheeled excavators.

The new MX series combines Hydrema's tradition of ultra-compact wheeled excavators with the latest technology.

The MX14, MX16, and MX18 models are all highly effective excavators which are simply more compact than comparable machines on the market.

The powerful 167 hp Cummins QSB 4.5 L EPA Tier 4 Final engine with DOC and SCR catalysts and advanced electronically controlled hydraulics ensures that the machine is ready for all the different jobs and work tools needed over the course of the workday.

The ROPS cab is amongst the biggest on the market. Together with low noise level, high comfort and simple controls this ensures an effective and comfortable workday.

The compact size, versatility, unique excavator arm geometry and high performance make the MX series an extremely competitive machine which is developed and produced based on Hydrema's well known high level of quality.

Look forward to read more about the new 33,000-44,000 lb wheeled excavators from Hydrema.



### ADVANTAGES

The MX series works effectively even in confined spaces, such as narrow streets, busy roads, and other areas with limited space.

Strong machines with the best breakout and lifting force, rapid digging cycles, and many configuration options for the operator.

High quality and innovation ensures durability for years to come.

Excellent visibility and high comfort.



Most compact in its class



Comfortable solutions



Strong and effective



Easy service access



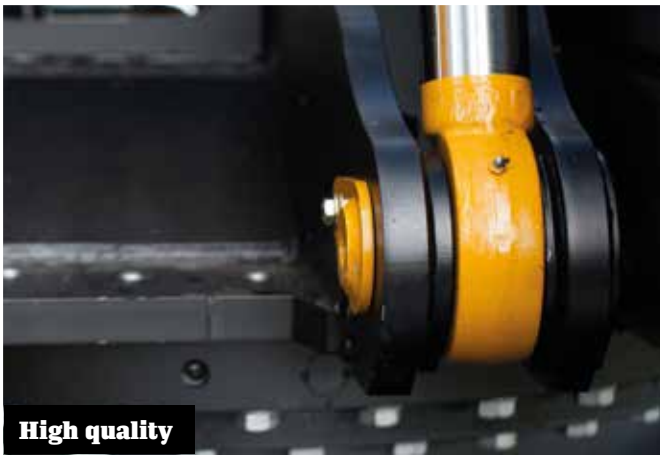
Ample storage space



Largest cab in its class



Control at your fingertips



High quality



## CITY EXCAVATOR

**Swing circle**  
From 10'10"

**Ultra-short rear end**  
From 5'1"

SHORTEST REAR END IN ITS CLASS. FROM:

# 61 inches

**The MX series is developed as an ultra-compact wheeled excavator, which is great for use in cities, in heavy traffic areas, or where space is limited.**

**The shortest tail swing radius in its class significantly increases usability.**

The MX series' very compact upper carriage offers a very short tail swing, which specifically means that the machine can work where other machines do not have enough space.

The MX14, MX16, and MX18 are extremely compact compared to their competitors in the same weight class.

The short swing circle and high performance in both breakout force and strength provide an extremely operational and flexible machine that can be used in many places under many different conditions.

The MX series comes into its own in urban areas where work is constricted by space or in congested work situations where the machine's minimal swing radius and short

rear end are important factors. Combined with the MX series' technology, features and many configuration options, it is the perfect City excavator.

The MXs have a high speed on the road, which makes transport between nearby jobs quicker.





CITY EXCAVATOR

# Performance compares favorably



**Great stability and great hydraulics. Definitely a machine to consider when buying a new one."**

## **A smooth machine with breakout force, engine power, and digging features at the absolute top of its class.**

### **A strong performer**

A look at the MX series' data and lifting charts quickly reveals that it is one of the most competitive machines in terms of performance.

An optimized excavator arm with high speed and breakout force provides a very productive machine despite its compact size. At the same time, the lifting capacity is among the best for wheeled excavators and comparable to standard excavators.

The environmentally-friendly 167 hp Cummins QSB 4.5 EPA Tier 4 Final engine provides plenty of power for digging. Hose burst valves on the stabilizers, VA boom and dipper significantly increase safety during lifting jobs.

### **Built for your jobs**

The MX series is built on a modular undercarriage, and depending on your type of work, the dozer blades and stabilizers can be mounted so the machine suits your needs. The machine also has good ground clearance under both dozer blade and stabilizers.

### **High hydraulic power**

A dual-circuit electronically-controlled hydraulic system effectively adjusts the hydraulic power for any task.

Two hydraulic pumps provides a total oil flow of 107 gpm, of which 23 gpm is dedicated to the slew system. Therefore the MX always has enough power for your task.

There is also a hydrostatic high pressure system for the slew function, which gives the machine superior slew precision and low fuel consumption.

From the instrument panel, the operator can electronically adjust the optional hydraulic functions depending on the tools the machine is carrying and the oil flow and pressure required for the work.

### **Long reach**

The excavator's reach, digging depth, and strike height are among the best, which underscores the excavators' versatility and usability. The dipper is available in lengths 6'7", 8'2" or 9'10".





## WORKING CONDITIONS

# Large cab with lots of comfort.

### The best possible working environment

The ROPS cab is among the largest on the market, and it provides an excellent basis for a good working environment. The great visibility increases safety at work.

The cab is designed to ensure the best possible comfort for the machine operator.

The seat's many configuration options, the placement of the joysticks and the key pad panels were all developed together, taking the operator's individual needs and daily work situations into account.

Keypad panels with a CAN-BUS controlled operating system means easy and intelligent operation of the machine. The instrument panel has a diagnostic function for quick servicing and troubleshooting.

The separate monitor for the rear and side view cameras provides a clear view while operating.

The placement of the radiator on the opposite side of the machine - away from the cab - reduces noise and heat transfer.

Effective air conditioning ensures the right temperature and great air quality. A built-in heater/cooler box of 3.8 gal. is available as an option.

The optional boom suspension of the excavator arm provides a comfortable ride when roading





## PERFORMANCE & TECHNOLOGY

# Many years of experience combined with intelligent technology.



### Excavator

Compact excavator with two-piece boom for all models. VA boom/dipper build in high tensile steel with closed profiles. The dipper is available in 6'7", 8'2", and 9'10". Hydraulic quick hitch and tilt rotator as options.

### Undercarriage

6 possible undercarriage variants:

Rear dozer blade(A1)  
Front dozer blade(A1V)  
Front/rear dozer blade(2x A1)  
Front dozer blade/rear stabilizers (A3)  
Front stabilizers/rear dozer blade (A3V)  
Front/rear stabilizers (A4)

All under carriage options are illustrated on page 16.

### Transmission

ZF 2-speed soft shift powershift transmission with electro-hydraulic gearshift system. Choose between manual or automatic gearshift.

### Hydraulic system

Dual-circuit system with Load Sensing and high pressure hydrostatic slew system with separate pumps. Electronic power regulation of pumps for working hydraulics. Mode-Control for precision work and ECO-Mode for fuel savings. Up to 3 hydraulic options freely adjustable from the cab. Option 3 with oil flow priority. Freely adjustable pressure and oil quantity for up to 10 tools.

#### Oil quantity:

Working hydraulics	84 gpm
Slew hydraulics	23 gpm

System pressure:	
Working hydraulics	5,076 psi
Swing hydraulics	5,729 psi

Hydraulic option 1	0-53 gpm
--------------------	----------

Hydraulic option 2	0-26.5 gpm
--------------------	------------

Hydraulic option 3	13-53 gpm
--------------------	-----------

### Driving hydraulics

Hydrostatic propulsion with constant 4-wheel drive. Variable drive motor with brake valve. 2-speed soft shift powershift transmission for road and off-road gear.

	MX14	MX16	MX18
Road gear (mph)	23	22	22
Off-road gear (mph)	0-5.6	0-5.6	0-5.6
Creep gear (mph)	0-2.5	0-2.5	0-2.2
Max. traction (lbf)	23,400	23,400	29,400

### Axles

ZF axles with 45% limited-slip differential lock and planetary reduction in the hubs. Brakes in all hubs for optimal digging brake. Front axle with center bolt and pendulum lock. Oscillating angle: +/- 8°

### Steering

Hydraulic steering with emergency steering. Joystick steering (max. 6.2 mph) as an option.

### Electrical system

Robust and protected wiring. Only waterproof plugs are used on the exterior, which guarantees long life and trouble-free functionality. The electronic units in the machine are short circuit protected and comply with applicable EMC requirements. All fuses and relays are located beside the cab and can easily be inspected via the service hatch. The machine is equipped with electronic emergency operation in case of a breakdown in the electronic units.

### Slew system

Hydrostatic high pressure slewing system. Brake energy from slew partially regenerated to the diesel engine. The mechanical slew brake is an integrated planetary gear.

Slewing speed	10.8 rpm
Slewing torque	36,900 lbf ft

### Engine

Cummins QSB 4.5L EPA Tier 4 Final engine with DOC and SCR catalyst with Ad Blue. 16 valve common-rail Turbo diesel with intercooler, electronically variable turbo charger and EGR with cooling.  
Max. performance: 167 hp (123kW) at 2000 rpm.  
Max. torque: 678 Nm (500 lb ft) at 1500 rpm.  
Fuel tank: 79 gal. AdBlue tank: 5 gal.

### Operation

Joysticks with 4 proportional servo functions, 1 proportional roller and 4 buttons. Optional hydraulics controlled by rollers. Stabilizer operated with foot pedal independently of other features. Pressure and oil volume for optional hydraulics can be controlled electronically from the instrument panel. Up to 10 different configurations can be saved. Joysticks with 2 rollers and 5 buttons as optional equipment. Mode Control for max. engine revs with 4 modes. Automatic idle stop.

### Brakes

Dual-circuit system with maintenance-free brake discs in oil bath on all wheels. Parking brake integrated into the transmission. Automatic excavation brake is standard.

### Cab

Very roomy ROPS cab with sliding window in the door, skylight, adjustable steering column, and armrests. Air conditioning with 7 adjustable air nozzles. Air suspended seat. The various feature adjustments can be saved via the CAN BUS-controlled Keypads or through the instrument panel. Very large rear view mirrors with electronic adjustment. Storage space under and behind the seat.

### Noise level

<b>Cab:</b> 71 dB	<b>Exterior:</b> 102 dB
----------------------	----------------------------



# Easy access to service points.

## Solutions that make it easy to service.

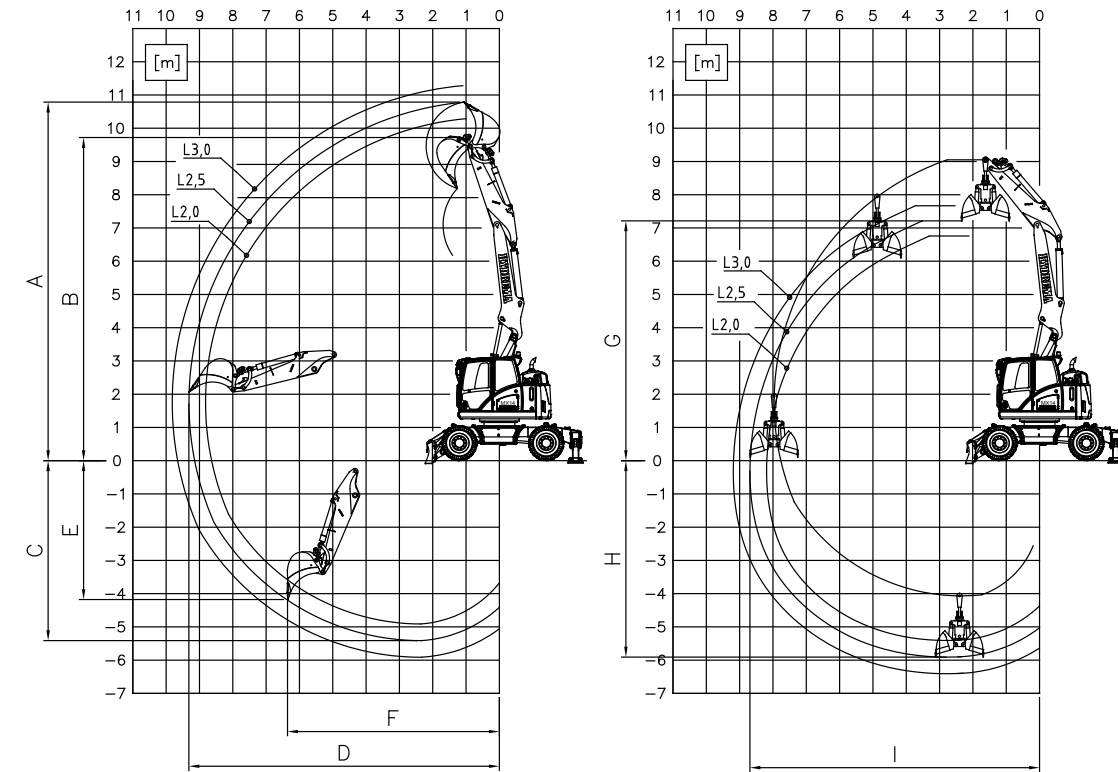
Access to the engine is quick and comfortable with electronic opening of the bonnet on the side of the machine. A service door on the side of the cab can be opened for easy access to fuses and battery isolator.

The opening to the engine and radiator is large, which enables access and servicing while standing on ground level. If there is a need for access to the top of the machine where the large diesel tank and hydraulic pumps are located, a ladder can be pulled out from the left hand side of the upper-carriage.

With the optional automatic lubrication kit, your machine will take care of its own greasing requirement. A reversible cooling fan is available as an option, to further ease the daily maintenance.



# Working area and breakout force.

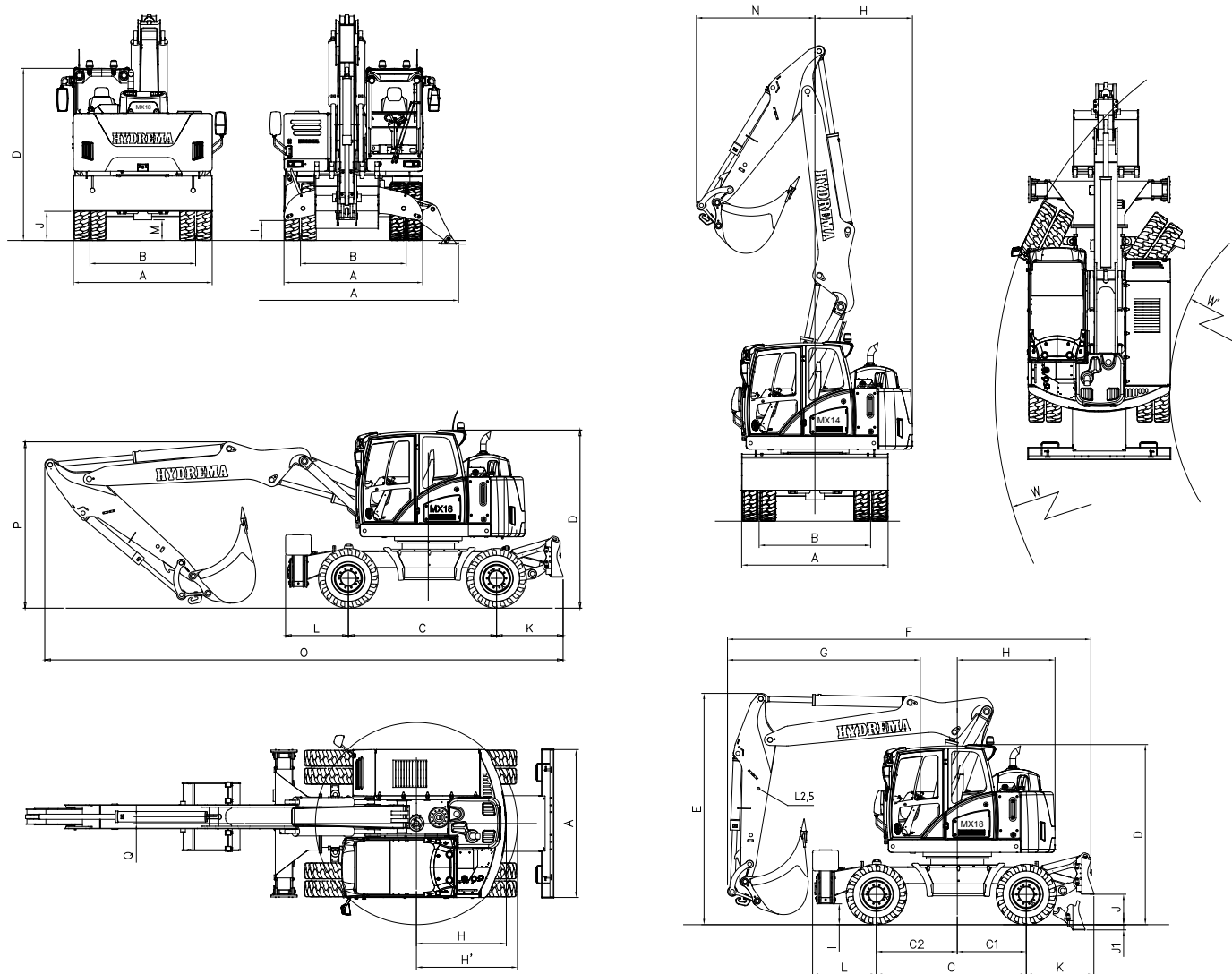


		MX14			MX16			MX18			
		ft	6'7"	8'2"	9'10"	6'7"	8'2"	9'10"	6'7"	8'2"	9'10"
<b>A</b>	Strike height	ft	33'9"	35'4"	36'12"	33'9"	35'4"	36'12"	35'0"	36'8"	38'3"
<b>B</b>	Lifting height	ft	31'3"	31'11"	33'6"	31'3"	31'11"	33'6"	31'6"	33'2"	34'9"
<b>C</b>	Digging depth	ft	16'1"	17'9"	19'5"	16'1"	17'9"	19'5"	17'6"	19'2"	20'9"
<b>D</b>	Reach	ft	28'11"	30'7"	32'3"	28'11"	30'7"	32'3"	30'3"	31'11"	33'6"
<b>E</b>	Vertical digging depth	ft	12'2"	13'9"	15'3"	12'2"	13'9"	15'3"	13'3"	14'9"	16'4"
<b>F</b>	Horizontal digging depth	ft	20'3"	20'10"	19'8"	20'3"	20'10"	19'8"	21'2"	21'10"	22'5"
<b>G</b>	Lifting height	ft	23'4"	24'12"	26'7"	23'4"	24'12"	26'7"	22'3"	23'10"	25'6"
<b>H</b>	Working depth	ft	19'1"	20'9"	22'5"	19'1"	20'9"	22'5"	17'7"	19'2"	20'10"
<b>I</b>	Reach	ft	26'10"	28'6"	30'2"	26'10"	28'6"	30'2"	26'10"	28'6"	30'2"
	Bucket rotation angle	°	175	175	175	175	175	175	175	175	175
<b>Breakout force, directly mounted bucket</b>											
	Breakout force, bucket (ISO)	lbf	23,821			23,821			31,013		
	Digging force (ISO)	lbf	20,900	18,428	16,181	20,900	18,428	16,181	24,945	21,799	19,327
<b>Maximum recommended bucket size</b>											
	Standard bucket	yd <sup>3</sup>	1.05			0.92			1.31		
<b>Maximum recommended bucket size of rotortilt</b>											
	Standard bucket	yd <sup>3</sup>	0.78			1.18			1.05		

The working area is specified with Hydrema standard bucket and 5'11" grab height.



# Dimensions and weight.



UNDERCARRIAGE VARIANTS		
A1	A1V	2xA1
A3	A3V	A4

DIMENSIONS		MX14	MX16	MX18
		ft'in"		
<b>A</b>	Width across:			
	Blade	8'4"	8'4"	8'4"
	Support, lowered	12'8"	12'8"	12'8"
	Tire 10.00-20	8'4"	8'4"	8'4"
	Tire 600/40-R22.5	8'3"	8'3"	8'3"
	Tire 700/40-R22.5	8'11"	8'11"	8'11"
<b>B</b>	Track width with standard tires	6'4"	6'4"	6'4"
<b>C</b>	Wheelbase	8'6"	8'6"	8'6"
<b>C1</b>	Distance, pivot center to rear axle	3'11"	3'11"	3'11"
<b>C2</b>	Distance, pivot center to front axle	4'7"	4'7"	4'7"
<b>D</b>	Clearance height, cab	10'3"	10'3"	10'3"
<b>E</b>	Transport height	13'1"	13'1"	13'1"
<b>F</b>	Length, road transport	20'9"	20'9"	20'9"
<b>G</b>	Overhang, front (with 8'2" stick)	10'11"	10'11"	10'11"
<b>H</b>	Rear distance, pivot center - counterweight	5'1"	5'5"	5'7"
<b>H1</b>	Swing radius, rear	5'8"	5'11"	6'0"
<b>I</b>	Ground clearance, stabilizer	12"	12"	12"
<b>I1</b>	Ground clearance, wheels, lower stabilizer	0'2"	0'2"	0'2"
<b>J</b>	Ground clearance, blade	1'8"	1'8"	1'8"
<b>J1</b>	Ground clearance, wheels, lower blade	0'3"	0'3"	0'3"
<b>K</b>	Overhang, blade	3'10"	3'10"	3'10"
<b>L</b>	Overhang, stabilizer	3'8"	3'8"	3'8"
<b>M</b>	Ground clearance, axles	12"	12"	12"
<b>N</b>	Swing radius, front			
	with 6'7" dipper	5'5"	5'5"	5'8"
	with 8'2" dipper	6'6"	6'6"	6'9"
	with 9'10" dipper	7'7"	7'7"	7'11"
<b>O</b>	Total length during transport, 8'2"	28'7"	28'7"	29'11"
<b>P</b>	Height of VA boom during shipping, 8'2"	9'7"	9'7"	9'7"
<b>Q</b>	Center shift, VA boom	0'5"	0'5"	0'5"
<b>W</b>	Outside turn radius	21'12"	21'12"	21'12"
<b>W1</b>	Inside turn radius	11'10"	11'10"	11'10"

Dimensions with standard tires 10.00-20

MACHINE WEIGHT		MX14	MX16	MX18
<b>Undercarriage</b>		lb		
A1	Dozer bade	34,612	37,699	40,565
A3	Dozer blade+stabilizer	37,258	40,124	43,210
2XA1	Front and rear dozer blade	36,817	39,903	40,565
A4	Front and rear stabilizer	37,919	41,006	44,092

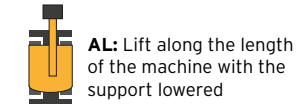
Weight specifications are with 882 lb (MX14-16) and 1,100 lb (MX18) bucket and standard tires



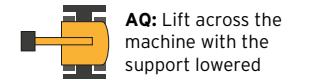
# Lifting capacity.



**F:** Lift 360° with support raised



**AL:** Lift along the length of the machine with the support lowered



**AQ:** Lift across the machine with the support lowered

## MX14 : MAX LIFTING CAPACITY IN TONNE WITH CHASSIS A3, DIPPER 6'7", WEIGHT QUICK HITCH 331 LB. ISO 10567\*

Reach in ft																						
		10			13			16			19			22			25			Max.		
H	AQ	F	AL	AQ	F	AL	AQ	F	AL	AQ	F	AL	AQ	F	AL	AQ	F	AL	AQ	F	AL	
28	17200*	13500	17200*																			
24	14500*	14100	14500*	14900*	9000	14900*	12200	6200	14100*													
20	12800*	12800*	12800*	14400*	8900	14400*	12300	6200	14700*	9100	4500	13300*										
16	15000*	12800	15000*	16000*	8400	16000*	11900	5900	15600*	8900	4400	14300*	6900	3300	11000							
12	21400*	12500	21400*	16100	7500	21200*	11400	5500	17400*	8600	4100	13900	6800	3200	10900							
8	25000*	11400	25000*	15400	6900	24500*	10700	4900	18100	8200	3800	13500	6600	3000	10600	5400	2400	8600	5100	2200	8200	
4	24600	10000	29800*	14500	6200	26300	10200	4500	17500	7900	3500	13100	6400	2800	10400	5300	2300	8500				
0	23100	8900	33900*	13900	5800	25600	10000	4300	17200	7700	3400	12900	6300	2700	10300	5200	2300	8500				
-4	22600	8600	36700*	13800	5700	25500	9900	4200	17100	7700	3300	12900	6200	2700	10300							
-8	23200	9000	37500*	14200	5900	25900	10100	4300	17300	7800	3400	13000										
-12	24300	9800	30900*																			

## MX16 : MAX LIFTING CAPACITY IN TONNE WITH CHASSIS A3, DIPPER 6'7", WEIGHT QUICK HITCH 331 LB. ISO 10567\*

Reach in ft																						
		10			13			16			19			22			25			Max.		
H	AQ	F	AL	AQ	F	AL	AQ	F	AL	AQ	F	AL	AQ	F	AL	AQ	F	AL	AQ	F	AL	
28	17200*	16200	17200*																			
24	14500*	14500*	14500*	14900*	10900	14900*	14100*	7700	14100*													
20	12800*	12800*	12800*	14400*	10800	14400*	14400	7700	14700*	10700	5700	13300*										
16	15000*	15000*	15000*	16000*	10200	16000*	14100	7400	15600*	10600	5600	14300*	8300	4300	12000*							
12	21400*	15200	21400*	19000	9300	21200*	13500	6900	17400*	10300	5300	14900*	8200	4200	12700							
8	25000*	14100	25000*	18300	8800	24500*	12900	6400	19500*	9900	5000	15700	8000	4000	12400	6500	3200	10100	6200	3000	9700	
4	29200	12700	29800*	17400	8100	26800*	12300	5900	20500	9600	4700	15400	7800	3800	12200	6400	3200	10000				
0	27700	11600	33900*	16800	7600	27100*	12100	5700	20100	9400	4500	15100	7600	3700	12100	6400	3100	10000				
-4	27200	11300	36700*	16700	7500	27400*	12000	5700	20100	9300	4500	15100	7600	3700	12000							
-8	27800	11600	37500*	17100	7800	27800*	12200	5800	20300	9500	4600	15300										
-12	28900	12400	30900*																			

## MX14 : MAX LIFTING CAPACITY IN TONNE WITH CHASSIS A3, DIPPER 8'2", WEIGHT QUICK HITCH 331 LB. ISO 10567\*

Reach in ft																						
		10			13			16			19			22			25			Max.		
H	AQ	F	AL	AQ	F	AL	AQ	F	AL	AQ	F	AL	AQ	F	AL	AQ	F	AL	AQ	F	AL	
28	13700*	13700*	13700*	13100*	9000	13100*																
24	11000*	11000*	11000*	12000*	9300	12000*	12000*	6500	12000*	9200	4600	10800*										
20	9500*	9500*	9500*	11300*	9200	11300*	11900*	6400	11900*	9300	4700	11800*	7100	3500	10400*							
16	10400*	10400*	10400*	12200*	8700	12200*	12200	6100	12800*	9100	4500	12800*	7100	3400	11200	5600	2600	8600*				
12	20500*	12800	20500*	16500	7800	19300*	11600	5600	16200*	8800	4300	14100	6900	3300	11000	5500	2500	8800				
8	23900*	11700	23900*	15500	7000	23700*	10900	5100	18400	8400	3900	13600	6600	3100	10700	5400	2400	8700	4600	2000	7500	
4	24700	10100	29700*	14500	6200	26400	10300	4600	17700	8000	3600	13200	6400	2900	10400	5300	2300	8500				
0	22900	8800	31700*	13800	5700	25500	10000	4300	17300	7700	3400	12900	6200	2700	10300	5200	2200	8400				
-4	22300	8300	36100*	13700	5600	25400	9800	4100	17100	7600	3300	12800	6200	2600	10200	5200	2200	8400				
-8	22800	8700	36900*	13900	5700	25600	9900	4200	17100	7600	3300	12800	6300	2700	10300							
-12	23500	9200	35700*	14400	6100	25400*	10300	4500	17600													

## MX16 : MAX LIFTING CAPACITY IN TONNE WITH CHASSIS A3, DIPPER 8'2", WEIGHT QUICK HITCH 331 LB. ISO 10567\*

Reach in ft																						
		10			13			16			19			22			25			Max.		
H	AQ	F	AL	AQ	F	AL	AQ	F	AL	AQ	F	AL	AQ	F	AL	AQ	F	AL	AQ	F	AL	
28	13700*	13700*	13700*	13100*	10900	13100*																
24	11000*	11000*	11000*	12000*	11200	12000*	12000*	7900	12000*	10800*	5800	10800*										
20	9500*	9500*	9500*	11300*	11100	11300*	11900*	7900	11900*	10900	5900	11800*	8500	4500	10400*							
16	10400*	10400*	10400*	12200*	10600	12200*	12800*	7600	12800*	10800	5700	12800*	8400	4400	11500*	6800	3400	8600*				
12	20500*	15500	20500*	19300*	9700	19300*	13700	7100	16200*	10400	5400	14300*	8300	4300	12800	6700	3400	10300				
8	23900*	14400	23900*	18400	8900	23700*	13000	6500	18600*	10000	5100	15400*	8000	4100	12500	6600	3300	10200	5700	2800	8100*	
4	29300	12700	29700*	17400	8100	26600*	12500	6000	20500*	9700	4800	15400	7800	3800	12200	6400	3200	10000				
0	27500	11400	31700*	16700	7500	27000*	12100	5700	20200	9400	4500	15200	7600	3700	12000	6300	3100	9900				
-4	26900	11000	36100*	16600	7500	27200*	12000	5600	20000	9300	4400	15000	7500	3600	12000	6300	3100	9900				
-8	27400	11300	36900*	16800	7600	27600*	12000	5600	20100	9300	4500	15100	7600	3700	12100							
-12	28100	11900	35700*	17300	8000	25400*	12400	6000	18400*													

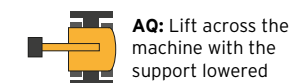
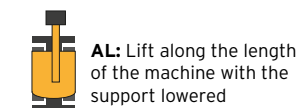
## MX14 : MAX LIFTING CAPACITY IN TONNE WITH CHASSIS A4, DIPPER 9'10", WEIGHT QUICK HITCH 331 LB. ISO 10567\*

Reach in ft																						
		10			13			16			19			22			25			Max.		
H	AQ	F	AL	AQ	F	AL	AQ	F	AL	AQ	F	AL	AQ	F	AL	AQ	F	AL	AQ	F	AL	
28				10900*	9500	10900*	10300*	6500	10300*													
24				9400*	9400*	9400*	10000*	6800	10000*	9900*	4900	9900*	7500*	3500	7500*							
20				8800*	8800*	8800*	9800*	6700	9800*	9900*	4900	9900*	9300	3700	9700*							
16	7200*	7200*	7200*	9300*	9100	9300*	10300*	6400	10300*	10500*	4700	10500*	9200	3600	10400*	7300	2700	8900*				
12	12000*	12000	12000*	12500*	8300	12500*	12600*	5900	12600*	11400	4400	12300*	8900	3400	11400	7200	2600	9100				
8	22800*	12100	22800*	21400	7500	21700*	14600	5300	17400*	11000	4000	14100	8600	3100	11100	7000	2500	9000	5500	1800	6700*	
4	28800*	10300	28800*	20100	6500	25800*	13900	4700	18300	10500	3700	13700	8400	2900	10800	6800	2300	8800				
0	31000*	9000	31000*	19100	5800	26300	13400	4400	17800	10200	3400	13300	8100	2700	10500	6700	2200	8600				
-4	32600	8300	34400*	18900	5600	26000	13100	4200	17500	10000	3200	13100	8000	2600	10400	6600	2100	8600				
-8	33000	8500	36500*	18900	5600	26000	13100	4100	17500	10000	3200	13100	8000	2600	10400							
-12	33800	9000	37500*	19300	5900	26500*	13400	4400	17800	10200	3400	13300										

## MX16 : MAX LIFTING CAPACITY IN TONNE WITH CHASSIS A4, DIPPER 9'10", WEIGHT QUICK HITCH 331 LB. ISO 10567\*

Reach in ft																					
		10			13			16													





**MX18 : MAX LIFTING CAPACITY IN TONNE WITH CHASSIS A3, DIPPER 6'7", WEIGHT QUICK HITCH 331 LB. ISO 10567\***

Reach in ft																					
H	10			13			16			19			22			25			Max.		
	AQ	F	AL	AQ	F	AL	AQ	F	AL	AQ	F	AL	AQ	F	AL	AQ	F	AL	AQ	F	AL
28	19800*	18500	19800*	18600*	11900	18600*															
24	16800*	16800*	16800*	17600*	12200	17600*	15900	8700	15900*	11700	6400	14200*									
20	16300*	16300*	16300*	17400*	11900	17400*	15700	8500	16200*	11800	6400	14000*	9100	4900	12900*						
16	25100*	16700	25100*	20600*	11100	20600*	15200	8100	17100*	11500	6200	14400*	9100	4800	13300*	7300	3800	11100			
12	22100*	16200	22100*	20100	9900	23700*	14400	7400	18600*	11100	5800	15500*	8800	4600	13500	7200	3700	11000			
8	25800*	14900	25800*	19300	9300	24300*	13700	6800	20500*	10600	5400	16600*	8500	4300	13200	7000	3600	10800	6100	3000	9500
4	28100*	13400	28100*	18400	8500	25700*	13100	6300	20900*	10200	5000	16300	8300	4100	13000	6900	3400	10700			
0	29600	12400	33200*	17800	8000	26300*	12800	6100	20900*	10000	4800	16000	8100	4000	12800	6800	3300	10600			
-4	29300	12300	35800*	17800	8100	26600*	12800	6000	21100*	9900	4800	15900	8100	3900	12700	6800	3400	10000*			
-8	29800	12600	36400*	18200	8400	27100*	13000	6200	21500	10100	4900	16100	8300	4100	11800*						
-12	30700	13300	34800*	18800	8900	24600*	13600	6700	17600*												

**MX18 : MAX LIFTING CAPACITY IN TONNE WITH CHASSIS A4, DIPPER 8'2", WEIGHT QUICK HITCH 331 LB. ISO 10567\***

Reach in ft																					
H	10			13			16			19			22			25			Max.		
	AQ	F	AL	AQ	F	AL	AQ	F	AL	AQ	F	AL	AQ	F	AL	AQ	F	AL	AQ	F	AL
32	16600*	16600*	16600*																		
28	15800*	15800*	15800*	15700*	12500	15700*	14400*	8800	14400*												
24				14100*	12700	14100*	14600*	9000	14600*	13500*	6700	13500*	9400*	5000	9400*						
20	11900*	11900*	11900*	13900*	12400	13900*	14500*	8800	14500*	13500*	6600	13500*	11700	5100	12300*						
16	14800*	14800*	14800*	16100*	11600	16100*	16300*	8400	16300*	13900*	6400	13900*	11500	5000	12600*	9300	3900	11500			
12	24300*	16300	24300*	22300*	10500	22300*	17700*	7800	17700*	14200	6000	14800*	11200	4700	13200*	9100	3800	11400			
8	26100*	14800	26100*	24100*	9500	24100*	18000	7100	19800*	13700	5500	16000*	10900	4400	13700	9000	3600	11200	7100	2800	8300*
4	27300*	13600	27300*	24700	8700	25500*	17300	6500	20800*	13200	5200	16800	10600	4200	13400	8800	3500	11000			
0	30900*	12400	30900*	24000	8100	26100*	16900	6200	20800*	12900	4900	16500	10400	4000	13100	8600	3300	10800			
-4	35100*	12100	35100*	24000	8100	26300*	16700	6100	20900*	12800	4800	16300	10300	3900	13000	8600	3300	10800			
-8	35900*	12400	35900*	24200	8300	26700*	16800	6100	21300*	12800	4800	16400	10300	4000	13100						
-12	36900*	13000	36900*	24800	8700	26900*	17200	6400	20400*	13200	5200	14600*									

**MX18 : MAX LIFTING CAPACITY IN TONNE WITH CHASSIS A3, DIPPER 8'2", WEIGHT QUICK HITCH 331 LB. ISO 10567\***

Reach in ft																					
H	10			13			16			19			22			25			Max.		
	AQ	F	AL	AQ	F	AL	AQ	F	AL	AQ	F	AL	AQ	F	AL	AQ	F	AL	AQ	F	AL
32	16600*	16600*	16600*																		
28	15800*	15800*	15800*	15700*	13700	15700*	14400*	9600	14400*												
24				14100*	13800	14100*	14600*	9800	14600*	12500	7300	13500*	9400*	5500	9400*						
20	11900*	11900*	11900*	13900*	13500	13900*	14500*	9600	14500*	12500	7200	13500*	9700	5600	12300*						
16	14800*	14800*	14800*	16100*	12800	16100*	16200	9200	16300*	12200	7000	13900*	9600	5500	12600*	7700	4300	11200			
12	24300*	18100	24300*	21800	11600	22300*	15400	8500	17700*	11700	6600	14800*	9300	5200	13200*	7600	4200	11100			
8	26100*	16600	26100*	20500	10600	24100*	14600	7800	19800*	11200	6100	16000*	9000	4900	13300	7400	4000	10900	5600	2700	8300*
4	27300*	15300	27300*	19400	9700	25500*	13900	7200	20800*	10800	5700	16300	8700	4700	13000	7200	3900	10700			
0	30900*	14100	30900*	18800	9200	26100*	13500	6900	20800*	10500	5500	16000	8500	4500	12700	7100	3700	10500			
-4	30900	13800	35100*	18700	9100	26300*	13400	6800	20900*	10300	5400	15900	8400	4400	12600	7000	3700	10500			
-8	31300	14100	35900*	18900	9300	26700*	13400	6800	21200	10400	5400	15900	8400	4400	12700						
-12	32100	14700	36900*	19500	9700	26900*	13800	7200	20400*	10800	5800	14600*									

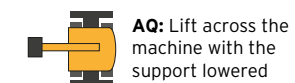
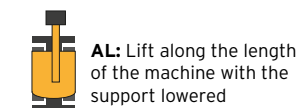
**MX18 : MAX LIFTING CAPACITY IN TONNE WITH CHASSIS A4, DIPPER 9'10", WEIGHT QUICK HITCH 331 LB. ISO 10567\***

Reach in ft																					
H	10			13			16			19			22			25			Max.		
	AQ	F	AL	AQ	F	AL	AQ	F	AL	AQ	F	AL	AQ	F	AL	AQ	F	AL	AQ	F	AL
32	15400*	15400*	15400*	13500*	12300	13500*															
28				13100*	12900	13100*	12900*	9200	12900*	11300*	6700	11300*									
24				11500*	11500*	11500*	12100*	9300	12100*	12300*	6900	12300*	11400*	5300	11400*						
20				11100*	11100*	11100*	12000*	9100	12000*	12400*	6900	12400*	11500*	5300	11500*	9500	4100	10300*			
16	9900*	9900*	9900*	12300*	12100	12300*	13100*	8700	13100*	13500*	6600	13500*	11700	5100	11900*	9500	4100	11300*			
12	23900*	16900	23900*	20700*	11100	20700*	17000*	8100	17000*	14200*	6200	14200*	11400	4900	12700*	9300	3900	11500			
8	26600*	15400	26600*	24200*	9800	24200*	18400	7400	18900*	13900	5700	15500*	11100	4600	13600*	9100	3700	11300	6600	2600	6900*
4	26600*	13500	26600*	25000	8800	25500*	17600	6700	20600*	13400	5300	16600*	10700	4300	13500	8900	3500	11100			
0	30600*	12400	30600*	24300	8300	26100*	17100	6300	20800*	13100	5000	16600	10500	4100	13200	8700	3400	10900			
-4	33800*	12000	33800*	24000	8200	26300*	16800	6100	20900*	12900	4900	16400	10300	4000	13100	8600	3300	10800			
-8	35700*	12300	35700*	24100	8200	26600*	16800	6100	21100*	12800	4800	16400	10300	3900	13000	8600	3300	10800			
-12	36500*	12800	36500*	24600	8500	27400*	17000	6300	21600*	13000	5000	16600	10600	4200	12200*						
-16	32700*	13500	32700*	23500*	9200	23500*															

**MX18 : MAX LIFTING CAPACITY IN TONNE WITH CHASSIS A3, DIPPER 9'10", WEIGHT QUICK HITCH 331 LB. ISO 10567\***

Reach in ft																					
H	10			13			16			19			22			25			Max.		
	AQ	F	AL	AQ	F	AL	AQ	F	AL	AQ	F	AL	AQ	F	AL	AQ	F	AL	AQ	F	AL
32	15400*	15400*	15400*	13500*	12100	13500*															
28				13100*	12800	13100*	12900*	9100	12900*	11300*	6700	11300*									
24				11500*	11500*	11500*	12100*	9200	12100*	12300	6900	12300*	9500	5200	11400*						
20				11100*	11100*	11100*	12000*	9000	12000*	12200	6800	12400*	9500	5200	11500*	7600	4100	10300*			
16	9900*	9900*	9900*	12300*	12000	12300*	13100*	8600	13100*	11900	6500	13500*	9400	5100	11900*	7600	4000	11300*			
12	23900*	16700	23900*	20700*	10900	20700*	15100	8000	17000*	11500	6100	14200*	9100	4800	12700*	7400	3900	11200			
8	26600*	15100	26600*	19800	9700	24200*	14200	7300	18900*	10900	5700	15500*	8700	4500	13500	7200	3700	11000	5200	2500	6900*
4	26600*	13300	26600*	18600	8700	25500*	13500	6600	20600*	10500	5200	16600	8400	4200	13100	7000	3500	10800			
0	29300	12200	30600*	18000	8200	26100*	13000	6200	20800*	10100	4900	16200	8200	4000	12800	6800	3300	10600			
-4	28700	11800	33800*	17800	8000	26300*	12800	6000	20900*	9900	4800	15900	8000	3900	12700	6700	3300	10500			
-8	29100	12100	35700*	17800	8100	2660															





MX18 : MAX LIFTING CAPACITY IN TONNE WITH CHASSIS A3 (WIDE AXLES), DIPPER 6'7", WEIGHT QUICK HITCH 331 LB. ISO 10567*																						
Reach in ft																						
	10			13			16			19			22			25			Max.			
H	AQ	F	AL	AQ	F	AL	AQ	F	AL	AQ	F	AL	AQ	F	AL	AQ	F	AL	AQ	F	AL	
28	19800*	19800*	19800*	18600*	13200	18600*																
24	16800*	16800*	16800*	17600*	13500	17600*	15900*	9600	15900*	12200	7100	14200*										
20	16300*	16300*	16300*	17400*	13200	17400*	16200*	9400	16200*	12300	7100	14000*	9500	5400	12900*							
16	25100*	18700	25100*	20600*	12400	20600*	15900	9000	17100*	12000	6800	14400*	9500	5400	13300*	7600	4200	11100				
12	22100*	18200	22100*	21200	11200	23700*	15100	8300	18600*	11600	6500	15500*	9200	5100	13500	7500	4200	11000				
8	25800*	16800	25800*	20400	10500	24300*	14300	7600	20500*	11100	6000	16600*	8900	4900	13200	7400	4000	10800	6400	3400	9500	
4	28100*	15300	28100*	19400	9700	25700*	13800	7100	20900*	10700	5700	16300	8700	4700	13000	7200	3900	10700				
0	31600	14300	33200*	18800	9200	26300*	13500	6900	20900*	10500	5500	16000	8500	4500	12800	7100	3800	10600				
-4	31400	14100	35800*	18900	9300	26600*	13500	6900	21100*	10400	5400	15900	8500	4500	12700	7200	3800	10000*				
-8	31800	14400	36400*	19300	9600	27100*	13700	7000	21500	10600	5600	16100	8700	4600	11800*							
-12	32800	15100	34800*	19900	10100	24600*	14300	7600	17600*													

MX18 : MAX LIFTING CAPACITY IN TONNE WITH CHASSIS A4 (WIDE AXLES), DIPPER 8'2", WEIGHT QUICK HITCH 331 LB. ISO 10567*																						
Reach in ft																						
	10			13			16			19			22			25			Max.			
H	AQ	F	AL	AQ	F	AL	AQ	F	AL	AQ	F	AL	AQ	F	AL	AQ	F	AL	AQ	F	AL	
32	16600*	16600*	16600*																			
28	15800*	15800*	15800*	15700*	13800	15700*	14400*	9700	14400*													
24				14100*	14000	14100*	14600*	9900	14600*	13500*	7400	13500*	9400*	5600	9400*							
20	11900*	11900*	11900*	13900*	13700	13900*	14500*	9800	14500*	13500*	7300	13500*	11700	5700	12300*							
16	14800*	14800*	14800*	16100*	12900	16100*	16300*	9300	16300*	13900*	7100	13900*	11500	5500	12600*	9300	4400	11500				
12	24300*	18300	24300*	22300*	11800	22300*	17700*	8700	17700*	14200	6700	14800*	11200	5300	13200*	9100	4300	11400				
8	26100*	16800	26100*	24100*	10800	24100*	18000	7900	19800*	13700	6200	16000*	10900	5000	13700	9000	4100	11200	7100	3200	8300*	
4	27300*	15600	27300*	24700	9900	25500*	17300	7400	20800*	13200	5800	16800	10600	4700	13400	8800	3900	11000				
0	30900*	14300	30900*	24000	9300	26100*	16900	7000	20800*	12900	5600	16500	10400	4600	13100	8600	3800	10800				
-4	35100*	14000	35100*	24000	9300	26300*	16700	6900	20900*	12800	5500	16300	10300	4500	13000	8600	3800	10800				
-8	35900*	14300	35900*	24200	9500	26700*	16800	7000	21300*	12800	5500	16400	10300	4500	13100							
-12	36900*	14900	36900*	24800	9900	26900*	17200	7300	20400*	13200	5900	14600*										

MX18 : MAX LIFTING CAPACITY IN TONNE WITH CHASSIS A3 (WIDE AXLES), DIPPER 8'2", WEIGHT QUICK HITCH 331 LB. ISO 10567*																						
Reach in ft																						
	10			13			16			19			22			25			Max.			
H	AQ	F	AL	AQ	F	AL	AQ	F	AL	AQ	F	AL	AQ	F	AL	AQ	F	AL	AQ	F	AL	
32	16600*	16600*	16600*																			
28	15800*	15800*	15800*	15700*	13700	15700*	14400*	9600	14400*													
24				14100*	13800	14100*	14600*	9800	14600*	12500	7300	13500*	9400*	5500	9400*							
20	11900*	11900*	11900*	13900*	13500	13900*	14500*	9600	14500*	12500	7200	13500*	9700	5600	12300*							
16	14800*	14800*	14800*	16100*	12800	16100*	16200	9200	16300*	12200	7000	13900*	9600	5500	12600*	7700	4300	11200				
12	24300*	18100	24300*	21800	11600	22300*	15400	8500	17700*	11700	6600	14800*	9300	5200	13200*	7600	4200	11100				
8	26100*	16600	26100*	20500	10600	24100*	14600	7800	19800*	11200	6100	16000*	9000	4900	13300	7400	4000	10900	5900	3100	8300*	
4	27300*	15300	27300*	19400	9700	25500*	13900	7200	20800*	10800	5700	16300	8700	4700	13000	7200	3900	10700				
0	30900*	14100	30900*	18800	9200	26100*	13500	6900	20800*	10500	5500	16000	8500	4500	12700	7100	3700	10500				
-4	30900	13800	35100*	18700	9100	26300*	13400	6800	20900*	10300	5400	15900	8400	4400	12600	7000	3700	10500				
-8	31300	14100	35900*	18900	9300	26700*	13400	6800	21200	10400	5400	15900	8400	4400	12700							
-12	32100	14700	36900*	19500	9700	26900*	13800	7200	20400*	10800	5800	14600*										

MX18 : MAX LIFTING CAPACITY IN TONNE WITH CHASSIS A4 (WIDE AXLES), DIPPER 9'10", WEIGHT QUICK HITCH 331 LB. ISO 10567*																						
Reach in ft																						
	10			13			16			19			22			25			Max.			
H	AQ	F	AL	AQ	F	AL	AQ	F	AL	AQ	F	AL	AQ	F	AL	AQ	F	AL	AQ	F	AL	
32	15400*	15400*	15400*	13500*	13500*	13500*																
28				13100*	13100*	13100*	12900*	10100	12900*	11300*	7500	11300*										
24				11500*	11500*	11500*	12100*	10200	12100*	12300*	7600	12300*	11400*	5900	11400*							
20				11100*	11100*	11100*	12000*	10000	12000*	12400*	7600	12400*	11500*	5900	11500*	9500	4600	10300*				
16	9900*	9900*	9900*	12300*	12300*	12300*	13100*	9600	13100*	13500*	7300	13500*	11700	5700	11900*	9500	4600	11300*				
12	23900*	18900	23900*	20700*	12300	20700*	17000*	9000	17000*	14200*	6900	14200*	11400	5500	12700*	9300	4400	11500				
8	26600*	17400	26600*	24200*	11000	24200*	18400	8200	18900*	13900	6400	15500*	11100	5200	13600*	9100	4200	11300	6600	2900	6900*	
4	26600*	15400	26600*	25000	10000	25500*	17600	7600	20600*	13400	6000	16600*	10700	4900	13500	8900	4000	11100				
0	30600*	14300	30600*	24300	9500	26100*	17100	7200	20800*	13100	5700	16600	10500	4600	13200	8700	3900	10900				
-4	33800*	13900	33800*	24000	9300	26300*	16800	7000	20900*	12900	5500	16400	10300	4500	13100	8600	3800	10800				
-8	35700*	14100	35700*	24100	9400	26600*	16800	7000	21100*	12800	5500	16400	10300	4500	13000	8600	3800	10800				
-12	36500*	14700	36500*	24600	9700	27400*	17000	7200	21600*	13000	5600	16600	10600	4700	12200*							
-16	32700*	15400	32700*	23500*	10400	23500*																

MX18 : MAX LIFTING CAPACITY IN TONNE WITH CHASSIS A3 (WIDE AXLES), DIPPER 9'10", WEIGHT QUICK HITCH 331 LB. ISO 10567*																						
Reach in ft																						
	10			13			16			19			22			25			Max.			
H	AQ	F	AL	AQ	F	AL	AQ	F	AL	AQ	F	AL	AQ	F	AL	AQ	F	AL	AQ	F	AL	
32	15400*	15400*	15400*	13500*	13400	13500*																
28				13100*	13100*	13100*	12900*	10000	12900*	11300*	7400	11300*										
24				11500*	11500*	11500*	12100*	10100	12100*	12300*	7600	12300*	9900	5800	11400*							
20				11100*	11100*	11100*	12000*	9900	12000*	12400*	7500	12400*	9900	5800	11500*	7900	4500	10300*				
16	9900*	9900*	9900*	12300*	12300*	12300*	13100*	9500	13100*	12400	7200	13500*	9800	5600	11900*	7900	4500	11300*				
12	23900*	18700	23900*	20700*	12200	20700*	15800	8900	17000*	12000	6800	14200*	9500	5400	12700*	7700	4300	11200				
8	26600*	17100	26600*	20900	10900	24200*	14900	8100	18900*	11400	6300	15500*	9100	5100	13500	7500	4100	11000	5400	2900	6900*	
4	26600*	15200	26600*	19600	9900	25500*	14200	7500	20600*	11000	5900	16600	8800	4800	13100	7300	3900	10800				</







# Lots of standard equipment and many options.

## STANDARD EQUIPMENT

### Machine

Compact excavator with two-piece boom:  
MX14 and MX16: V5.35 - MX18: V5.70  
Dipper in lengths of: 6'7", 8'2" and 9'10"  
167 hp EPA Tier 4 Final diesel engine with DOC and SCR catalyst with AdBlue  
Friction differential 45% in driving axle  
10.00-20 twin tires  
Wet multiple disk brakes in hub on driving axle  
2-speed hydrostatic power-shift transmission

### Operation

Electronically adjustable heated wing mirrors  
Keypad panels with backlighting, 7 pcs  
Joystick with proportional rollers and 4 buttons  
Independent pedal control of drive and support hydraulics  
Automatic gearshift for transmission  
Creep gear for 1st and 2nd gear in transmission  
Switches between road travel and work mode  
Cruise control  
Automatic headlights and cab light  
Electronic hand throttle with automatic function  
Acoustic driving alarm  
Speed-Up and ECO-mode  
Mode-Control with 33%, 66% excavator speed  
Automatic function for pendulum lock and digging brake  
Mute function for the radio in the armrest  
Automatic engine idle after 5 sec.  
Adjustable, automatic idle stop (1-60 min.)  
Overload alarm for F and AQ lifting work

### Hydraulics

Electronic power regulation of pump, ECO-mode  
Hydrostatic swing with energy recovery  
Safety valve for Z2, Z3, and Z4  
Pendulum lock for front axle  
Automatic function for pendulum lock and excavation brake

Float position for boom hydraulic Z3 (MX 18)  
Pressure equalization for digging functions  
10 programmable settings for optional hydraulics  
Hydrostatic-powered fan blade

### Cab

ROPS certified  
Openable windscreen, door with sliding window  
Cab suspension with viscous dampening  
External sun visor in front  
Air conditioning with 7 x air nozzles  
Radio with CD, MP3  
Sunshade windshield, roof hatch  
Comfortable seat with air suspension, heating, head restraints, front controls  
Seatbelt switch for seat, monitoring in the seat cushion  
12V and 24V electrical plugs  
Instrument display 4.3" in color with softkey and encoder  
Separate monitor for rear view camera  
Storage box under and behind seat  
Warning beacon, 2 pcs  
Cup and bottle holder, 2 pcs  
Red and white cab lights  
Interval, front screen wiper and screen wash function  
Pedal-controlled steering column with combi switch and ignition key

### Miscellaneous

Electronic opening of hood  
Tool box in undercarriage, 2 pcs  
Washer fluid, 1.3 gal. with level gauge  
Sensor monitoring of stabilizer during road travel  
Rear camera integrated into counterweight  
Megabeam work lights, 6 pcs  
Handheld lamp, tool kit

## OPTIONAL EQUIPMENT

### Undercarriage

REAR dozer blade (opposite steering axle)  
FRONT dozer blade (at steering axle)  
FRONT/REAR dozer blade  
FRONT dozer blade / REAR stabilizer  
REAR dozer blade / FRONT stabilizer  
FRONT/REAR stabilizers  
Options for undercarriage:  
Towing hitch  
BM-Quick hitch  
Dozer blade for BM-Quick hitch  
BM-Quick hitch with tilt function  
Bracket for clam shell grab (can only be mounted with A1 undercarr.)  
Optional hydraulics for A1 undercarriage + 7-pole el. plug  
Optional hydraulics for A3 undercarriage + 7-pole el. plug  
Hydraulic trailer brake  
Mud guards  
Wide axles (total width: 9 ft)

### Wheels & tires

Replacement wheels: 8 x 10.00-20  
Replacement wheels: 8 x 315/80-22.5  
Replacement wheels: 600/40-22.5  
Replacement wheels: 700/40-22.5

### Dipper lengths

6'7"  
8'2"  
9'10"

### Hydraulics

1" pipe layout for return flow  
Hydraulic option 2 - includes joystick steering  
Hydraulic option 3 (13-53 gpm)  
Quick release for grab - disconnects oil from bucket cylinder  
SVAB L8 Joystick including cable for Tilt rotator  
Boom suspension  
Float position for boom cylinder

### Quick hitch / Engcon tilt rotator

Pipe layout for OilQuick OQ60/OQ65/OQ70  
Quick hitch OilQuick OQ60/OQ65/OQ70 with 5 couplings (ZV1 ZV2, tank)  
Pipe layout for quick hitch - Engcon S60  
Engcon S60 quick hitch  
Tilt rotator Engcon EC219 with claw for direct mounting  
Tilt rotator Engcon EC219 with claw for S60 quick hitch  
Pipe layout for quick hitch - Lehnhoff HS10  
Lehnhof HS10 quick hitch

### Cab

Oil heater for cab and engine with control via mobile phone  
Swap to Xenon lights - 6 pcs  
Swap to LED lights - 4 pcs  
FOPS for cab (roof grill)  
FOPS for cab (roof grill + front grill)  
Cooling box with electronic regulation - 3,8 gal.

### Miscellaneous

Central lubrication point, excavator arm (2 lubrication points)  
Central lubrication point, dozer blade (1 lubrication point)  
Automatic central lubrication, excavator arm (0,5 gal. container)  
Electric pump for fuel tank  
Swap to bio-oil  
Reversible radiator fan  
Electric engine heater



# Quality. Innovation. Commitment.

**Every day, Hydrema continues the proud traditions which since 1959 have resulted in machine production of the highest quality, combined with modern technology.**

Hydrema develops and manufactures hydraulic construction equipment for customers who demand the highest performance and comfort as well as the most reliable and environmentally friendly equipment.

The machines are developed and produced in our own factories in Denmark and Germany.

The commitment, professionalism and enthusiasm of every single employee make it possible to deliver the best machine each time.

A machine that's ready to work hard every day, all year round, regardless of the weather, wind and terrain.

Hydrema's backhoe loaders, dump trucks, wheeled excavators and mine clearing vehicles currently operate all around the world for customers who value quality, innovative thinking and dedication.

# 1959

